

1

KNAPSACK

front

cut 1 main

cut 1 lining

“label” placement

2



twill
tape
placement

KNAPSACK

back/flap piece

cut 1 main

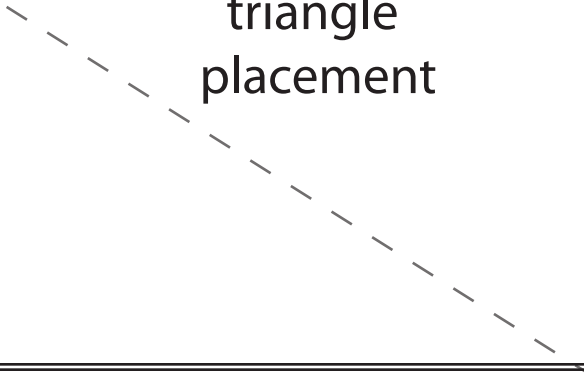
cut 1 lining



BY

see kat

triangle
placement





twill
tape
placement

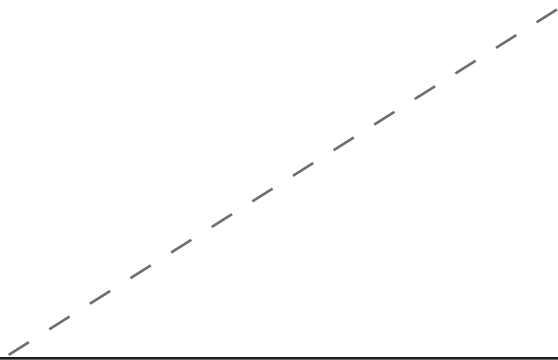
3

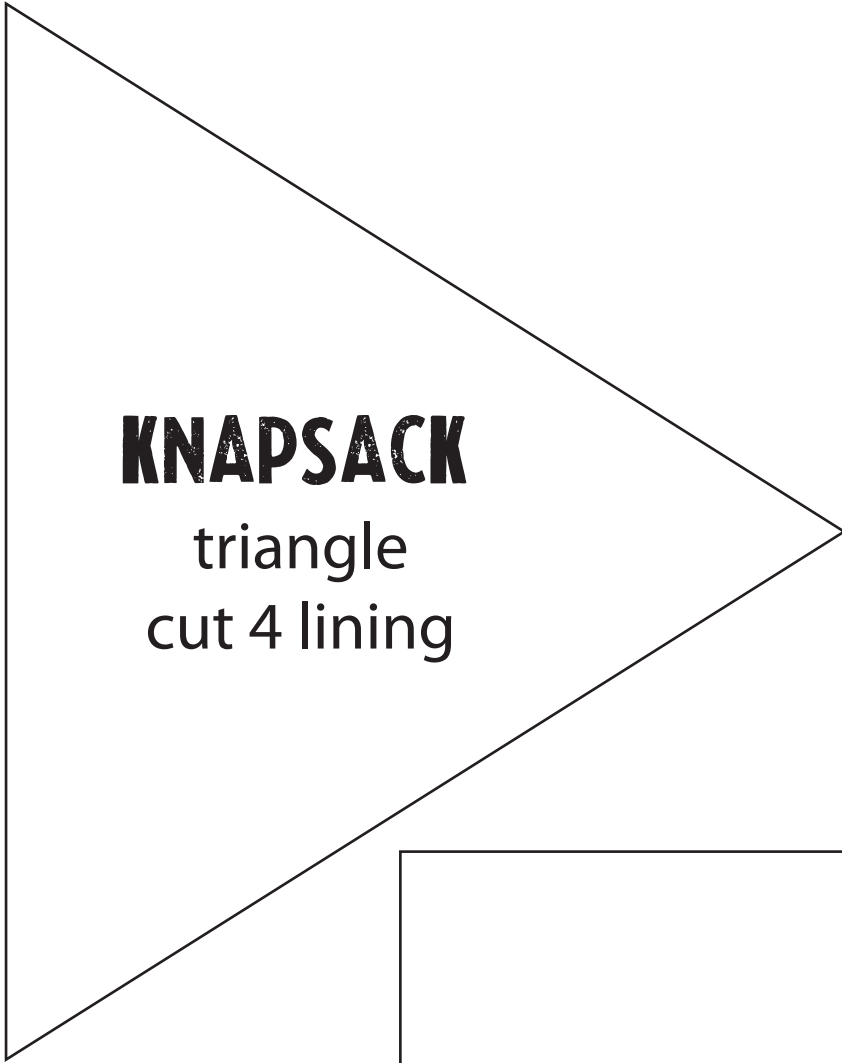
KNAPSACK

straps
cut 2 main



sew





KNAPSACK

triangle
cut 4 lining

KNAPSACK

"label"
cut 1 lining



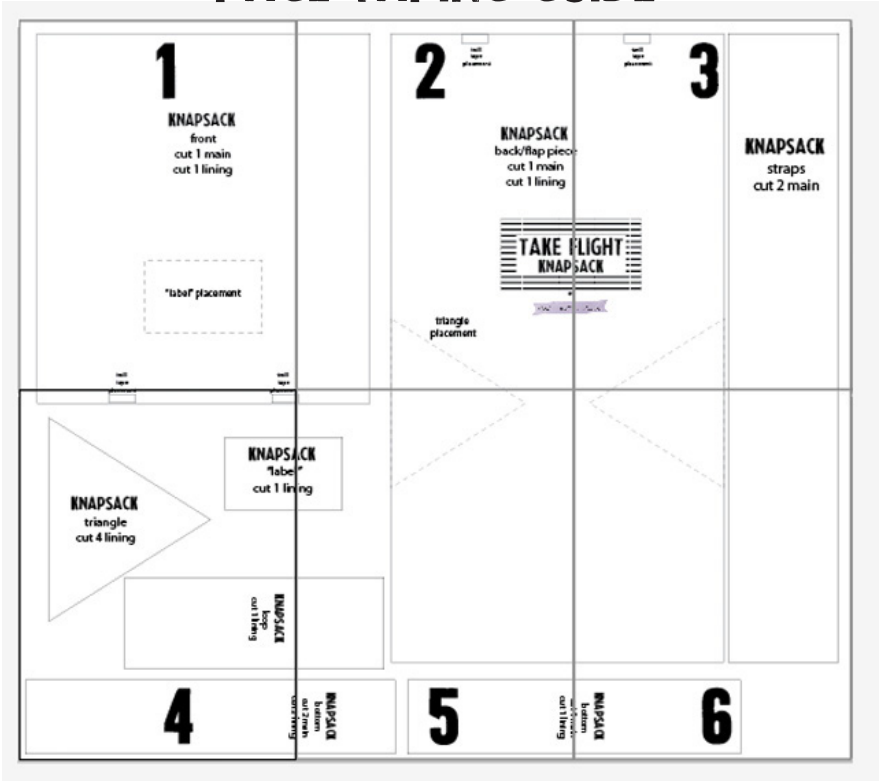
KNAPSACK

loop
cut 1 lining



ACK
"
ing

PAGE TAPING GUIDE



KNAPSACK
bottom
cut 2 main

5

cut 1 main
cut 1 lining

39

KNAPSACK

bottom

cut 1 main

